

SOUTHWIND® 2013

CLASS A GAS | **FLEETWOOD RV**



Morning Fog

TOP FEATURES

- Full-Body Paint
- 22.5" Aluminum Wheels
- One-Piece Panoramic Windshield
- Corian® Countertops
- Glazed Hardwood Cabinet Doors
- Chrome Mirrors w/Side View Cameras
- Sony® A/V Electronics
- Sony Blu-ray® Surround Sound System (Optional)
- 7' Interior Ceiling Height
- Halogen Lighting
- Soft-Touch Vinyl Ceiling



Antique Frost



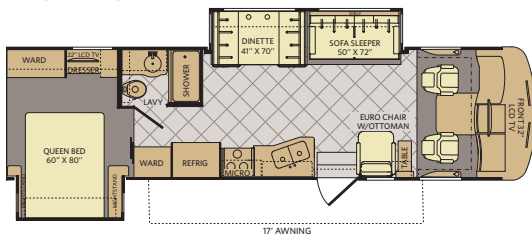
Sierra Stream



Vapor Mist

CHESTNUT RAVEN	CHOCOLATE BISQUE	CABINETRY

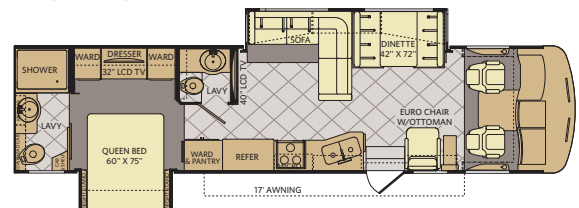
32VS



INTERIOR STORAGE CAPACITY: 114 CU. FT.
EXTERIOR STORAGE CAPACITY: 112 CU. FT.

Available options: 113, 192, 345, 490, 830, 833

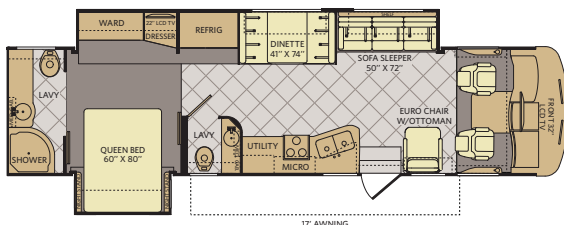
36L



INTERIOR STORAGE CAPACITY: 140 CU. FT.
EXTERIOR STORAGE CAPACITY: 118 CU. FT.

Available options 093, 113, 126, 490, 830, 833

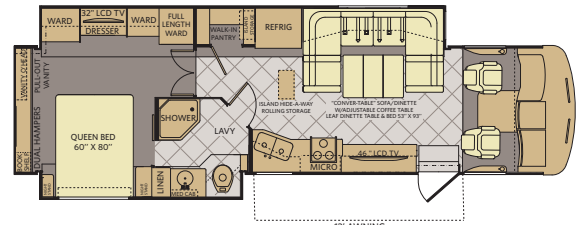
36D



INTERIOR STORAGE CAPACITY: 145 CU. FT.
EXTERIOR STORAGE CAPACITY: 105 CU. FT.

Available options 113, 126, 192, 490, 830, 833

36S



INTERIOR STORAGE CAPACITY: 132 CU. FT.
EXTERIOR STORAGE CAPACITY: 100 CU. FT.

Available options 093, 113, 126, 139, 852

OPTIONS

OPT. 093
EXTERIOR
ENTERTAINMENT
CENTER

OPT. 113
3-BURNER
RANGE
W/OVEN

OPT. 126
WASHER
/DRYER

OPT. 139
ELECTRIC FIREPLACE

OPT. 192
SOFA SLEEPER
W/AIR MATTRESS
& FOOTREST

OPT. 490
FREE
STANDING
RECLINER

OPT. 345
MID-SHIP 40" LED TV

OPT. 830
FACING DINETTE

OPT. 833
FREE-STANDING DINETTE
WITH CRENDENZA

OPT. 852
KING BED
72" X 80"

WEIGHTS & MEASUREMENTS

CHASSIS	POWER PLATFORM®			
MODELS	32VS	36D	36L	36S
Engine Displacement (liters)	6.8	6.8	6.8	6.8
Wheelbase (inches)	208"	228"	228"	228"
GVWR (lbs) ¹	22,000	22,000	22,000	22,000
Front GAWR (lbs) ²	8,000	8,000	8,000	8,000
Rear GAWR (lbs) ²	15,000	15,000	15,000	15,000
GCWR (lbs) ³	26,000	26,000	26,000	26,000
Hitch Rating Weight (lbs) ¹	5,000	5,000	5,000	5,000
Tongue Weight (lbs) ¹	500	500	500	500
Fuel Capacity (gal)	80	80	80	80

POWER PLATFORM® CHASSIS

Model: Ford®
Engine: 6.8L Triton V10
Transmission: Ford® 5-Speed, Automatic w/Overdrive

Alternator: 175 Amp
Torque: 457 lb-ft @ 3,250 RPM
Horsepower: 362HP

DIMENSIONS & CAPACITIES

MODELS	32VS	36D	36L	36S
Overall Length ⁴	33' 5"	36' 5"	36' 11"	36' 5"
Overall Height (with A/C)	12' 10"	12' 10"	12' 10"	12' 10"
Overall Width (maximum) ^{5, 6}	102"	102"	102"	102"
Interior Height (maximum)	84"	84"	84"	84"
Interior Width (maximum)	96"	96"	96"	96"
Fresh Water Holding Tank (gal)	80	80	80	80
Grey Water Holding Tank (gal)	58	58	58	58
Black Water Holding Tank (gal)	42	42	42	42
Appliance Propane Tank (gal) (WC) ⁷	25	25	25	25
Water Heater Tank (gal)	10	10	10	10

Liquid Weight Reference:

Water (gal) = (8.3 lbs/3.8 kgs) Fuel (gal) = (6.1 lbs/2.8 kgs) Propane (gal) = (4.2 lbs/1.9 kgs)

Metric Conversion:

Multiply pounds x 0.453 to obtain kilograms. Multiply gallons x 3.785 to obtain liters.

Multiply liters x 61 to obtain cubic inches.



CONFIGURE A COACH THE WAY YOU WANT!

COLORS • FLOOR PLANS • OPTIONS • DÉCOR

www.FLEETWOODRV.com



FLEETWOOD RV IS AN ALLIED SPECIALTY VEHICLE COMPANY.

Addendums

- GVWR (Gross Vehicle Weight Rating) is the maximum permissible weight of this fully loaded motorhome. The GVWR is equal to or greater than the sum of the (UVW) unloaded vehicle weight plus the (OCCC) occupant cargo-carrying capacity*.
- GAWR (Gross Axle Weight Rating) is the maximum permissible loaded weight a specific axle is designed to carry.
- GCWR (Gross Combined Weight Rating) is the value specified by the motorhome manufacturer as the maximum allowable loaded weight of this motorhome with its towed vehicle. Towing and braking capacities may be different. Refer to Fleetwood and chassis manufacturer's manuals for complete information.
- Length measured from front bumper to rear bumper (excludes accessories).
- Excludes safety equipment and awnings.
- Motorhomes feature a body width over 96" which will restrict your access to certain roads. Before purchasing, you should research any state and/or province road laws which may affect your usage.
- Tank manufacturer's listed water capacity (WC). Actual propane capacity is 80% of water listing as required by the safety code.

† The chassis manufacturer recommends the installation of a supplemental brake control system to activate the brakes on the vehicle or trailer you are towing. Hitch receiver ratings expressed are maximum for the hitch receiver installed and may require the purchase of additional equipment that is dependent on the weight of the towed load. Consult with hitch receiver manufacturer for further information.

* UVW and OCCC are found on the label containing the federal certification tag in each RV.

†† The Minimum Towable Load of this vehicle is the available weight capacity, up to GCWR, when the coach is fully loaded to maximum GVWR. However, if the coach is loaded to something less than maximum GVWR, that extra available weight capacity can be added to your Towable Load. For example, if your coach is loaded to 1000lbs less than maximum GVWR, your Towable Load increases accordingly. Do not exceed the hitch rating weight, GVWR or GCWR.

IMPORTANT—PLEASE READ

Product information, photography and illustrations included in this publication were as accurate as possible at the time of printing. For further product information and changes, please visit our website at www.fleetwoodrv.com or contact your local Fleetwood RV dealer. Prices, materials, design and specifications are subject to change without notice. All weights, fuel, liquid capacities and dimensions are approximate. Fleetwood RV has designed its recreational vehicles to provide a variety of uses for customers. Each vehicle features optimal seating, sleeping, storage and fluid capacities. The user is responsible for selecting the proper combination of loads (i.e., occupants, equipment, fluids, cargo, etc.) to ensure that the vehicle's capacities are not exceeded.

CONTACT US

To locate a dealer near you, visit our website at www.fleetwoodrv.com or call 1-800-322-8216. We can also be contacted at Fleetwood RV Customer Relations, P.O. Box 1007, Decatur, IN 46733.



** All 2013 Fleetwood RV motorhomes include a 1-year emergency Fleetwood RV Roadside Assistance membership. For complete info, see your Fleetwood RV dealer.

©2012 Fleetwood RV Inc. Printed in USA. Inventory Control Number SW13F2, 09/12.
 Model Year 2013, Second Edition.